

Module SLA DC G2 50mm SNC

Module SLA essence



Product description

- _ Fits in most existing MR16 / GU10 halogen luminaires
- _ Replacement of 50 W MR16 halogen lamps or 20 W HID lamp
- _ Module with integrated heatsink and optics
- _ Free choice of variable dimming and non-dimming LED drivers
- _ Pre-wired for quick and easy installation
- _ Eye-catching lens optic with mirrors halogen facettes
- _ Long lifetime: L70B50 >50,000 h
- _ 5 years guarantee

Optical properties

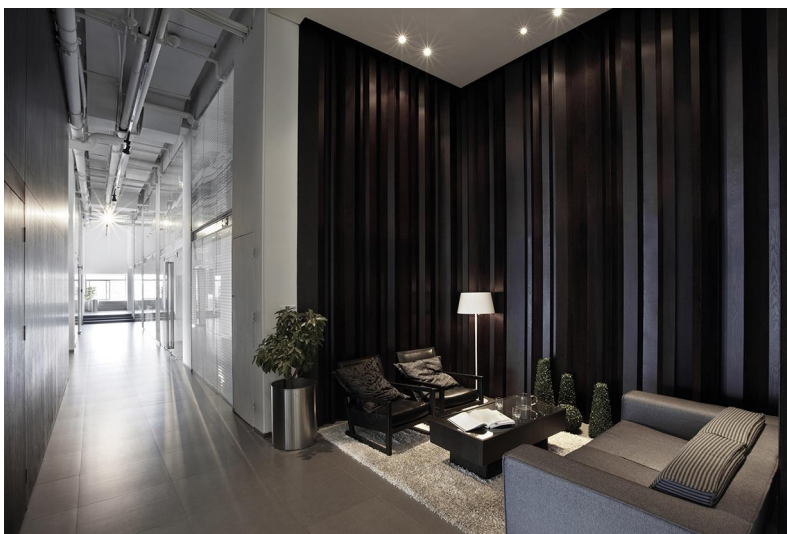
- _ Colour temperatures 2,700, 3,000 and 4,000 K
- _ Useful luminous flux 1,270 lm/W at Irated and tp = 75 °C
- _ Efficacy of the LED module 104 lm/W at Irated and tp = 75 °C
- _ Higher CRI, typical Ra = 92
- _ Small colour tolerance (MacAdam 3)
- _ Beam Angle: spot degree (12° / 24°) or downlight (36°)

Mechanical properties

- _ Module dimension $\varnothing 49,6 \times 60$ mm and $\varnothing 49,6 \times 70$ mm
- _ Mounting with mounting ring, see accessories

Website

<http://www.tridonic.com/28001945>



Spotlights



Downlights



Linear



Area



Floor | Wall



Free-standing



Street



Decorative

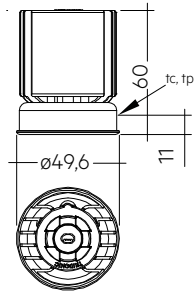


High bay

Module SLA DC G2 50mm SNC

Module SLA essence

The complete data sheet for this product is available in the Downloads section.

**Ordering data**

Type	Article number	Colour temperature	Packaging	Weight per pc.
SLA DC G2 50mm 700lm 930 36D SNC	28001945	3,000 K	80 pc(s).	0.090 kg

Technical data

Ambient temperature range	-20 ... +40 °C
tp rated for SLA DC 700lm	60 °C
tp rated for SLA DC 1200lm	75 °C
tc for SLA DC 700lm	75 °C
tc for SLA DC 1200lm	90 °C
I _{rated} for SLA DC 700lm	250 mA
I _{rated} for SLA DC 1200lm	350 mA
I _{max} for SLA DC 700lm	300 mA
I _{max} for SLA DC 1200lm	380 mA
Max. perm. LF current ripple for SLA DC 700lm	900 mA
Max. perm. LF current ripple for SLA DC 1200lm	1,030 mA
Max. permissible peak current for SLA DC 700lm	1,260 mA / max. 10 ms
Max. permissible peak current for SLA DC 1200lm	1,450 mA / max. 10 ms
Max. working voltage for insulation	60 V
Insulation test voltage	0.5 kV
ESD classification of LED module	Severity level 2
Risk group (IEC 62471)	RG1
Type of protection	IP20
Lumen maintenance L70B50	50,000 h
Guarantee	5 Year(s)

Approval marks**Standards**

EN 62031, EN 62471, EN 61547

Specific technical data

Type	Photometric code	Forward current	Usefull luminous flux at tp rated	Peak luminous intensity at tp rated	Beam characterist	Power consumption Pon at tp rated	Min. forward voltage at tc	Max. forward voltage at ta = -20 °C	Efficacy of the module at tp rated	Colour rendering index CRI
SLA DC G2 50mm 700lm 930 36D SNC	930/359	250 mA	840 lm	1,680 cd	36°	8.8 W	30.0 V	40.0 V	95 lm/W	> 90

① Tolerance of useful light flux - 0 % / + 15 %. Measurement uncertainty ± 10 %.

- ② Tolerance of peak luminous intensity - 0 % / + 15 %. Measurement uncertainty \pm 10 %.
- ③ Tolerance of power consumption P_{on} \pm 10 %. Measurement uncertainty \pm 5 %.